

Maximise your advantage

UDDEHOLM TOOL STEEL FOR HOT STAMPING

Uddeholm tool steel for hot stamping - making the most of your advantage

Advanced, high-strength steel has become a staple of the modern automotive industry. Environmental requirements as well as higher safety standards make it a key solution for manufacturers aiming for the winning combination of reduced weight and higher strength.

Until recently, cold forming was the dominating method for forming critical structural components in high-strength steel. Cold forming has recently been supplemented by the new, game-changing method, hot stamping, which places new demands on the tool steel used in the process.



© UDDEHOLMS AB

No part of this publication may be reproduced or transmitted for commercial purposes without permission of the copyright holder.

Classified according to EU Directive 1999/45/EC. For further information see our "Material Safety Data Sheets".
Edition 1, 05.2013. The latest revised edition of this brochure is the English version, which is always published on our web site www.uddeholm.com

HOT STAMPING: BENEFITS AND CHALLENGES

Hot stamping has rapidly become a complement to cold forming in the automotive industry – and no wonder. By using a heated blank that forms and hardens quickly in the die, parts can be made larger, stronger and more complex than ever before. This means fewer structural parts per vehicle, to the tune of 30–35 % weight reduction of individual parts!

Naturally, this places severe demands on the tool steel used in the dies. For instance, to function reliably at the temperatures involved the tool steel needs to have excellent thermal conductivity and hot yield strength as well as high toughness and ductility.

With steel from Uddeholm, it is possible to avoid common problems and go straight for longer, more predictable production runs and reduced cycle times.

30-35 % weight
reduction of individual parts



Tooling solutions for new techniques

Uddeholm is continually working with key industrial partners to bring to the market tooling solutions for advanced high strength steel, as we have done for over a decade. Thanks to our long experience we can advise you when it comes to choosing the right tool steel for hot stamping.

PREDICTABLE TOOL PERFORMANCE, LONGER PRODUCTION RUNS

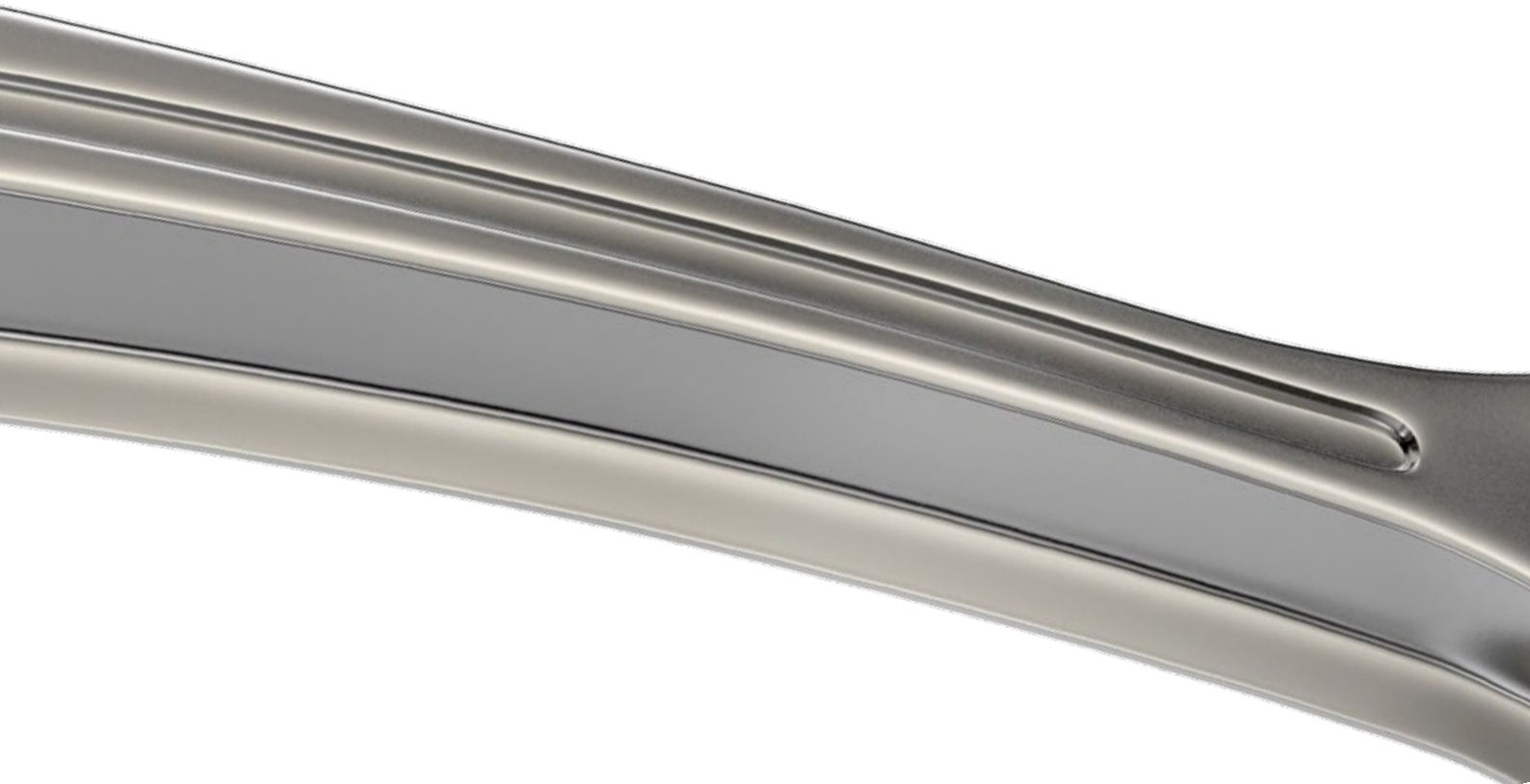
The high demands placed on the tool steel in hot stamping bring an increased risk of premature tool failure, leading to unplanned production stops and delays. Uddeholm tool steel for hot stamping will give you the benefit of predictable tool performance and longer production runs.

REDUCE YOUR CYCLE TIMES

An important aspect of hot stamping is cycle times. The dies used to form advanced high strength steel are heated up and must be allowed time to cool between pressings. Uddeholm tool steel helps you increase productivity by reduced cycle times thanks to excellent thermal conductivity, high strength and toughness enabling strong internal cooling.

SUPERIOR END PRODUCT

By choosing tool steel with the right properties, you can improve the quality of your products. A high-end tool steel resists wear at elevated temperatures and provides improved dimensional tolerances and fewer scrapped parts due to tool scratches. Coupled with long production runs, this is one of the key advantages of choosing Uddeholm tool steel.





Plasma or gas nitriding can be used on hot stamping tools to further increase hot wear resistance and reduce friction between the tool and sheet materials. Photo courtesy of AP&T Inc.



Coatings of PVD type, carried out after nitriding, improve the resistance to abrasive wear and galling.

BENEFIT FROM UDDEHOLM'S EXPERIENCE

We maintain a global presence that guarantees you get the same high quality tool steel wherever you are. Along with excellent delivery service, technical support and additional services, you can be assured that choosing Uddeholm tool steel will be beneficial in more ways than one.

IMPROVED TOTAL ECONOMY

In the automotive industry, the lowest cost per produced part often wins. Good quality tools pay off in the end as they ensure long and stable production runs. At Uddeholm, we know that your total economy can be improved by upgrading your tool steel.



TOOL MANUFACTURE AND MAINTENANCE

The manufacture and maintenance of tool steel are important aspects when choosing the right product for use in hot stamping. Uddeholm provides excellent technical guidelines for machining and heat treatment, and we always offer welding electrodes in matching materials for Uddeholm steel.

For more information on welding see the technical brochure "Welding of tool steel".



Choosing the right tool steel

UDDEHOLM QRO® 90 SUPREME

QRO 90 Supreme is perfect when the surface of the tool is subjected to excessive heat. The highest thermal conductivity in the Uddeholm hot stamping steel range combined with the highest resistance to wear at elevated temperature make this advanced high strength steel the number one choice for optimising cycle times in production.

UDDEHOLM UNIMAX®

When excessive wear is experienced in the die, Unimax shows its true qualities. At a recommended hardness of 56 HRC Unimax resists abrasive wear, both hot and cold, and significantly increases the life of the hot stamping die.

UDDEHOLM DIEVAR®

Dievar excels in almost all areas as a hot work tool steel. The unparalleled toughness and ductility decreases the risk of cracks in the die. This together with the high thermal conductivity and good hot strength makes this steel the ideal choice for your workhorse dies.

UDDEHOLM ORVAR® SUPREME/SUPERIOR

Orvar Supreme is a well-rounded steel that has proven itself as a great hot work tool steel for years. The combination of properties of the Orvar Supreme makes this a solid choice for your tooling needs.



Tool steel grades perfectly suited for hot stamping

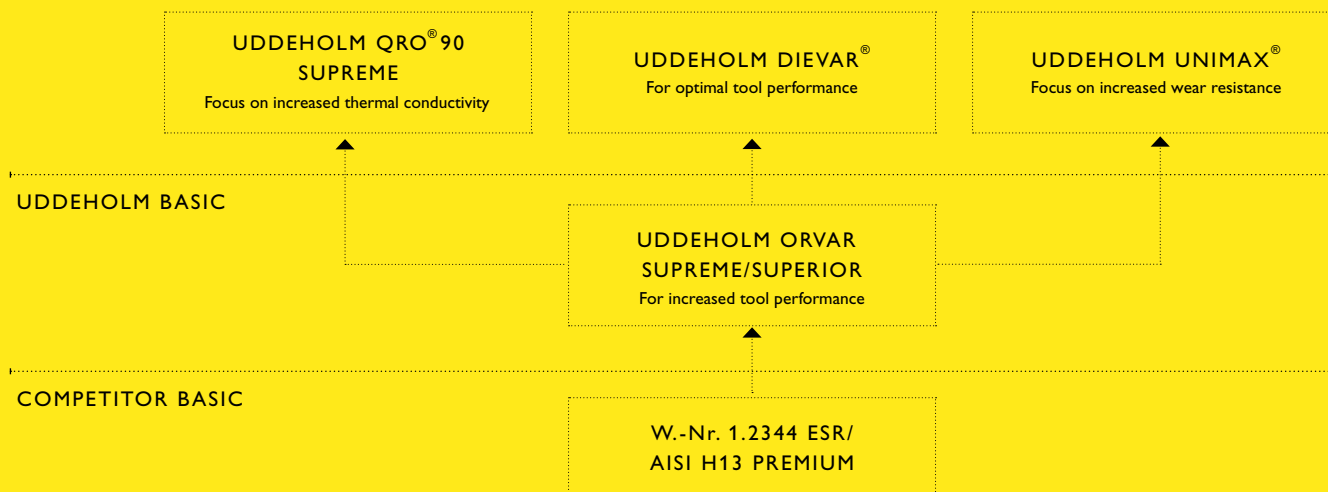
Uddeholm produces several tool steel grades perfectly suited for tools used in hot stamping. Hot stamping already means a great advantage over traditional production methods. By choosing the right tool steel you can maximise this advantage.

REQUIRED TOOL STEEL PROPERTIES

Hot stamping tool steel requires a particular set of properties in order to cope with the specific failure mechanisms involved in hot stamping.

PROPERTY	ENABLES
Good wear resistance at elevated temperatures	Abrasion resistance
Low friction	Adhesion resistance
Very good thermal conductivity	Reduced cycle times
Good ductility and toughness	Cracking resistance
Excellent machinability	Lower tool manufacturing costs
Good surface treatment properties	Adhesion, abrasion resistance

UDDEHOLM PREMIUM



STEEL GRADES FOR TRIMMING DIES

Uddeholm can provide suitable tool steel with excellent wear and chipping resistances for processes using mechanical trimming dies to smooth the edges of hot stamped parts.

	ABRASIVE WEAR	ADHESIVE WEAR	CHIPPING
UDDEHOLM VANADIS [®] 4 EXTRA			
UDDEHOLM CALDIE [®]			
W.-Nr. 1.2379/AISI D2			

UDDEHOLM is the world's leading supplier of tooling materials. This is a position we have reached by improving our customers' everyday business. Long tradition combined with research and product development equips Uddeholm to solve any tooling problem that may arise. It is a challenging process, but the goal is clear – to be your number one partner and tool steel provider.

Our presence on every continent guarantees you the same high quality wherever you are. ASSAB is our exclusive sales channel, representing Uddeholm in the Asia Pacific area. Together we secure our position as the world's leading supplier of tooling materials. We act worldwide, so there is always an Uddeholm or ASSAB representative close at hand to give local advice and support. For us it is all a matter of trust – in long-term partnerships as well as in developing new products. Trust is something you earn, every day.

For more information, please visit www.uddeholm.com, www.assab.com or your local website.

