

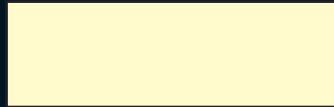
# TEMPERATURE GUIDE

## Colour chart for forging and hardening

## Tempering colours for unalloyed and low alloyed steel

1200° C  
2190° F

White



1100° C  
2010° F

Light yellow



1050° C  
1920° F

Yellow



980° C  
1800° F

Light orange



930° C  
1710° F

Orange



870° C  
1600° F

Light red



810° C  
1490° F

Light cherry



760° C  
1400° F

Cherry



700° C  
1290° F

Dark cherry



650° C  
1200° F

Blood red



600° C  
1110° F

Brown red



Gray green  
330° C  
630° F

Gray blue  
320° C  
610° F

Light blue  
310° C  
590° F

Cornflower blue  
300° C  
570° F

Dark blue  
290° C  
550° F

Violet  
280° C  
530° F

Purple  
270° C  
520° F

Red brown  
260° C  
500° F

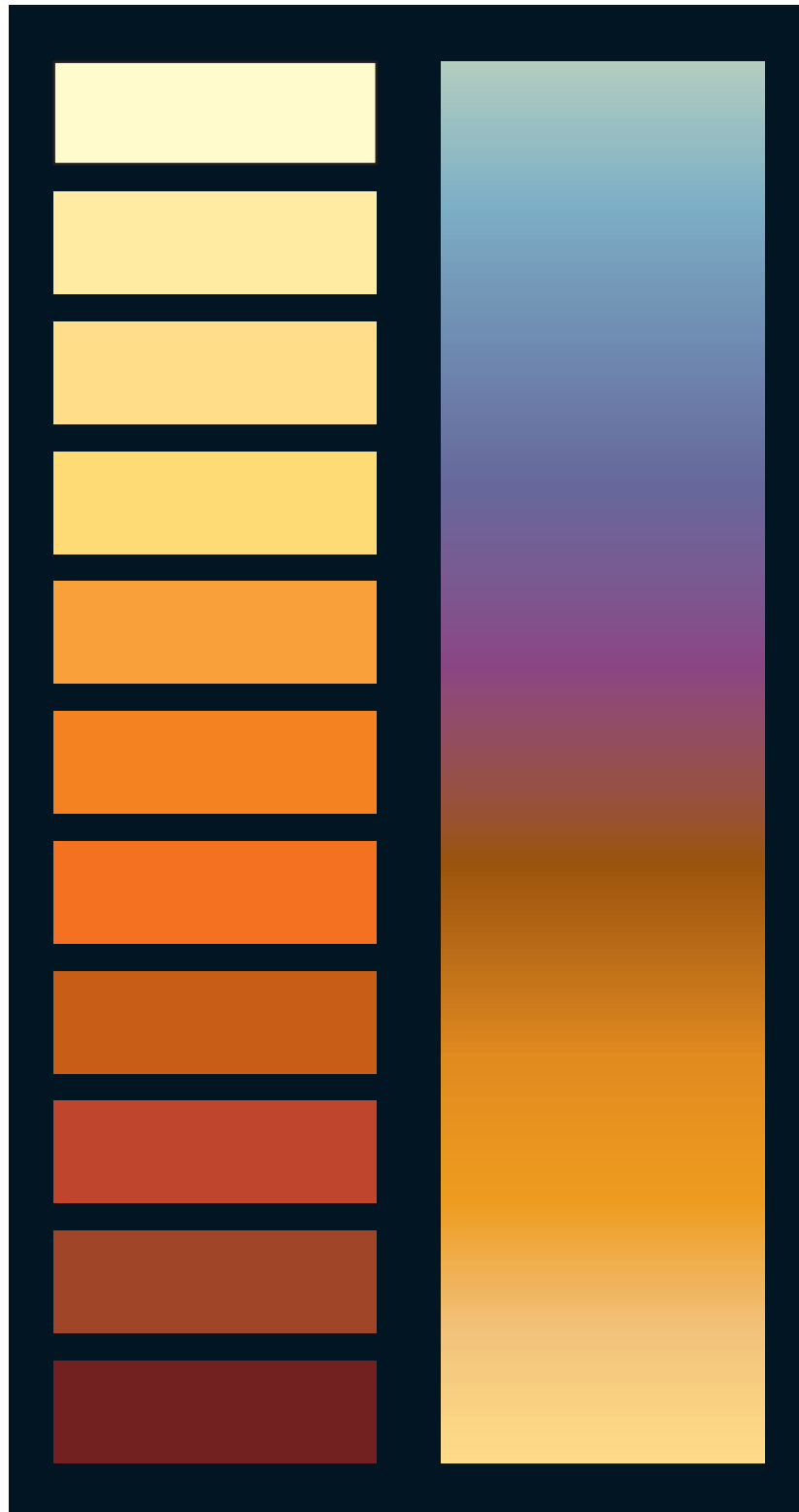
Yellow brown  
260° C  
480° F

Dark yellow  
240° C  
460° F

Yellow  
230° C  
450° F

Strawcoloured  
220° C  
430° F

Light yellow  
210° C  
410° F



The colour chart should be viewed in normal diffused daylight and not in sunlight or artificial light.



Colours assigned to a tempering time of 30 minutes. The colours should be viewed on a polished piece of steel